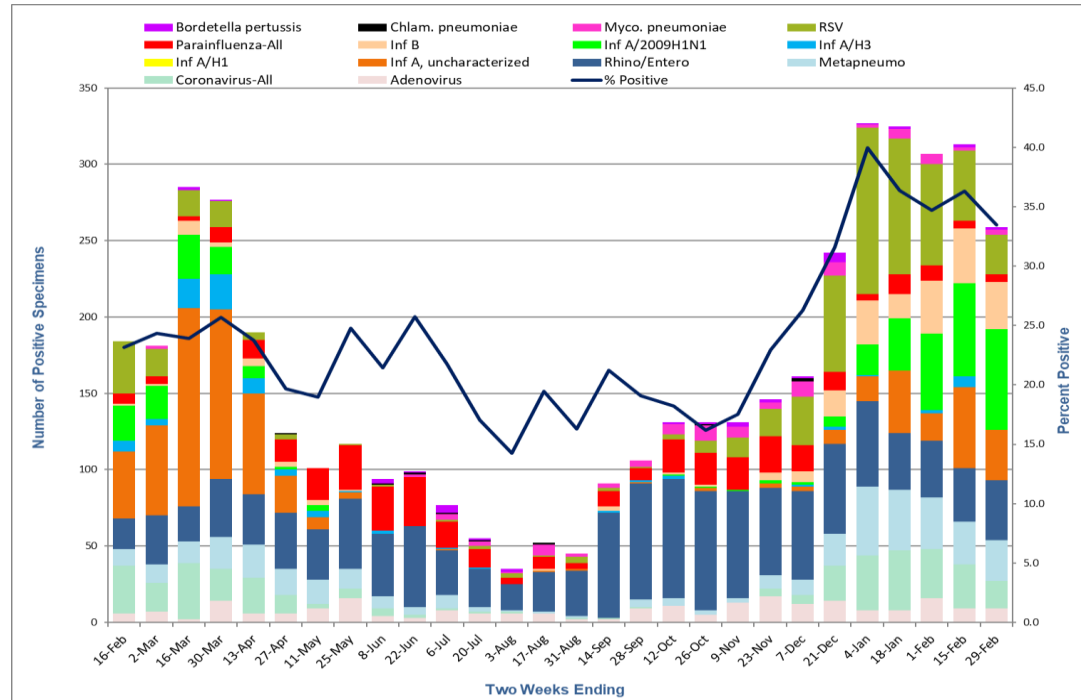


2020 AND PRIOR RESPIRATORY PATHOGENS BY PCR



2020

2 Weeks Ending	Adenovirus	Coronavirus-All	Metapneumo	Rhino/Entero	Inf A, uncharacterized	Inf A/H1	Inf A/H3	Inf A/2009H1N1	Inf B	Parainfluenza-All	RSV	Myco. pneumoniae	Chlam. pneumoniae	Bordatella pertussis	% Positive
4-Jan	8	36	45	56	16		1	20	29	4	109	2		1	40.0
18-Jan	8	39	40	37	41			34	16	13	89	6		2	36.4
1-Feb	16	32	34	37	18		2	50	35	10	66	7			34.7
15-Feb	9	29	28	35	53		7	61	36	5	46	2		2	36.3
29-Feb	9	18	27	39	33			66	31	5	26	3		2	33.5



2019

2 Weeks Ending	Adenovirus	Coronavirus-All	Metapneumo	Rhino/Entero	Inf A, uncharacterized	Inf A/H1	Inf A/H3	Inf A/2009H1N1	Inf B	Parainfluenza-All	RSV	Myc. pneumoniae	Chlam. pneumoniae	Bordetella pertussis	% Positive
5-Jan	7	29	9	48	24		1	14	3	13	54	4		1	22.5
19-Jan	13	30	17	40	36		2	23	2	3	65		1		24.3
2-Feb	4	40	8	33	73		1	15		6	47				24.6
16-Feb	6	31	11	20	44		7	23	1	7	34				23.1
2-Mar	7	19	12	32	59		4	22	1	5	18	2			24.4
16-Mar	2	37	14	23	130		19	29	9	3	17			2	23.9
30-Mar	14	21	21	38	111		23	18	3	10	17			1	25.7
13-Apr	6	23	22	33	66		10	8	5	12	5				23.8
27-Apr	6	12	17	37	24		4	2	3	15	3		1		19.7
11-May	9	3	16	33	8		4	4	3	21					19.0
25-May	16	6	13	46	4		1		1	29	1				24.8
8-Jun	4	5	8	41			2			29	1		1	3	21.5
22-Jun	3	2	5	53						32		2	1	1	25.7
6-Jul	8	1	9	29	1		1			17	1	4	1	5	21.8
20-Jul	6	1	3	25			1			12	2	3	1	1	17.0
3-Aug	6	1	1	17						4	3	1		2	14.2
17-Aug	6		1	26	1				1	8	1	7	1		19.5
31-Aug	2	1	1	30	1					4	4	2			16.3
14-Sep	2	1		69			1		3	10	2	3			21.2
28-Sep	9	1	5	76	1		1			8	1	4			19.1
12-Oct	11		5	78			2	1	1	22	3	7		1	18.2
26-Oct	5		3	78	2			1	1	21	8	10	1	1	16.2
9-Nov	13		3	70				1		21	13	7		3	17.5
23-Nov	17	5	9	57	3			2	5	24	18	4		2	23.0
7-Dec	12	6	10	58	3		1	2	7	17	32	10	2	1	26.3
21-Dec	14	23	21	59	9		2	7	17	12	63	9		6	31.6

2018

2 Weeks Ending	Adenovirus	Coronavirus-All	Metapneumo	Rhino/Entero	Inf A, uncharacterized	Inf A/H1	Inf A/H3	Inf A/2009H1N1	Inf B	Parainfluenza-All	RSV	Myc. pneumoniae	Chlam. pneumoniae	Bordetella pertussis	% Positive
6-Jan	3	45	22	42	126		99	11	25	4	98				36.1
20-Jan	6	51	26	23	201		87	16	60	2	82				31.6
3-Feb	5	33	37	19	180		63	18	42	3	75				30.6
17-Feb	6	23	22	31	94		40	10	78	2	75	1			27.5
3-Mar	4	6	31	31	39		14	5	81		56				22.7
17-Mar	2	11	22	33	20		6	1	93	4	33				22.9
31-Mar	2	9	26	27	7		3	2	64	2	23			1	22.3
14-Apr	5	2	21	27	13		6		59	8	24	1			21.1
28-Apr	2	6	32	38	2				34	6	16	1	2		22.0
12-May	3		17	22	1				17	13	4			2	17.2
26-May	2	2	4	21	3			2	1	14	2	1	1	1	16.8
9-Jun	1	3	8	25					1	25	2			1	21.1
23-Jun	2	1	4	24						11	1		1	2	17.6
7-Jul			4	23					1	14	2	1	1		18.8
21-Jul	4		1	27			1	1		6	1				17.2
4-Aug	1	1		26						6		1	3	4	21.3
18-Aug	3			21						9		1	1	1	14.6
1-Sep	1			29				1		5			2	2	16.4
15-Sep	1		1	49	2					5				1	18.6
29-Sep	1		3	43						3	1	1			14.2
13-Oct	3	2	2	41						7	2	2		1	14.0
27-Oct	3		3	40	1					8	5	2	1	1	12.0
10-Nov	5	2	3	49	2			1		8	5	5	1	6	15.9
24-Nov	6	1	4	44				1		10	11	4		1	15.2
8-Dec	4	5	9	48	1		1	1		11	31	4		1	15.9
22-Dec	9	16	8	34	12			1		9	38	7			18.5

2017

2 Weeks Ending	Adenovirus	Coronavirus-All	Metapneumo	Rhino/Entero	Inf A, uncharacterized	Inf A/H1	Inf A/H3	Inf A/2009H1N1	Inf B	Parainfluenza-All	RSV	Myc. pneumoniae	Chlam. pneumoniae	Bordatella pertussis	% Positive
7-Jan	5	51	6	28	13	1	18	1	6	8	70	1		1	27.1
21-Jan	1	46	11	21	50		38	1	9	9	88	1	2	3	32.9
4-Feb	8	42	18	29	57		46		19	4	59	18			31.6
18-Feb	7	41	17	31	78		73	2	43	4	83	1	1	1	35.0
4-Mar	5	31	22	22	89		68		55	6	72	2	1	2	33.3
18-Mar	4	12	21	33	45	4	2	3	62	6	39			4	25.0
1-Apr	6	16	29	39	44		27	5	61	11	34	1	1	4	29.5
15-Apr	3	8	30	40	18		15		34	6	24	1			24.2
29-Apr	1	2	19	32	2		1	1	6	4	14				14.8
13-May	5	2	9	46			1		7	17	9				21.7
27-May	5	1	9	57					1	21	6	1	1		28.4
10-Jun	3		8	42			1			19	1			1	20.3
24-Jun	3	1	4	28			2	1	1	19	1	1		5	21.1
8-Jul	5	1	1	30	1		1			13	2	1		3	20.3
22-Jul	2		3	23						15		1	1	1	15.5
5-Aug	4	4	3	24	1		2			4	2		1	1	18.8
19-Aug	2	6		26			3		1	5	1			1	16.8
2-Sep	2			34						7	1	1			16.1
16-Sep	2	3	1	65	4			2	1	1	1			3	20.0
30-Sep		1	1	55			1			11	4			1	18.4
14-Oct	1	2	3	51	1		1			10	3	1	1	1	14.4
28-Oct	3	3		42	3		4			14	5	3	3		16.1
11-Nov	4	12	3	65	4				2	21	10	1			21.1
25-Nov	6	18	2	64	4		3		1	13	14	1		1	21.0
9-Dec	2	25	6	49	16		14		2	6	31	1		1	22.9
23-Dec	8	27	15	32	47	7	37	7	5	14	69			3	31.5



	21	Ad	Cd	Me	Rh	In1	In2	In3	In4	In5	Pa	RS	Mj	Ch	Bc	%
2016	9-Jan	8	21	10	38	12		2	7		2	73	4		1	29.4
	23-Jan	11	34	16	22	6			14		1	61	3		2	25.9
	6-Feb	10	46	15	30	15	1		31	2	3	100	5	1	1	32.5
	20-Feb	7	53	23	37	39		3	75	4	1	73	3	1	1	35.5
	5-Mar	8	39	25	30	46		1	103	6		83	1	1	1	31.0
	19-Mar	12	33	40	43	38		3	89	15	2	65	2			30.8
	2-Apr	7	21	30	56	13		1	39	12	6	29	1		1	28.0
	16-Apr	8	13	37	50	8		1	17	8	4	12	1			22.2
	30-Apr	10	11	37	52	4		3	2	8	3	7			2	26.3
	14-May	8	11	13	49	1		1	1	5	4	5			1	21.2
	28-May	8	3	10	47	0	0	0	0	10	7	1	0	0	1	21.6
	11-Jun	6	4	9	32			1		2	1		1		1	18.2
	25-Jun	5		1	25					3	5	1			1	16.7
	9-Jul	4		1	18					1	12					15.7
	23-Jul	2			20					1	10				3	17.8
	6-Aug	1	1		21			1			11	1				17.6
	20-Aug		1		22	1		2			8		2			17.2
	3-Sep	1	3		41						8	3	2	1	1	23.3
	17-Sep	3			40						2		1	1	1	16.6
	1-Oct	1	1		54	2		1			11		1			18.3
	15-Oct	3	2	2	57			2			10	1			2	16.8
	29-Oct	3	2	1	57	1				1	15	1				18.7
	12-Nov	14	1	2	56	1					25	5	2			17.7
	26-Nov	4	5	1	46						23	18	2			19.4
	10-Dec	7	15	1	38	4		2	1		19	19	7		2	19.7
	24-Dec	5	28	5	36	14		3		3	18	39	4			23.6

	2 Weeks Ending	Adenovirus	Coronavirus-All	Metapneumo	Rhino/Entero	Inf A, uncharacterized	Inf A/H1	Inf A/H3	Inf A/2009H1N1	Inf B	Parainfluenza-All	RSV	Myc. pneumoniae	Chlam. pneumoniae	Bordatella pertussis	% Positive
2015	10-Jan	9	19	4	22	119		53		4	12	60	1		1	27.0
	24-Jan	7	14	4	18	32		16		6	4	62				20.6
	7-Feb	9	28	11	25	7		4		4	3	97				26.9
	21-Feb	3	17	14	27	5		4		13	7	79	1			29.4
	7-Mar	6	19	20	25	1		2		29	6	69				28.1
	21-Mar	4	15	27	23	1		2	2	52	6	39				27.2
	4-Apr	7	15	30	37	2				99	10	35	1			27.1
	18-Apr	11	11	31	41					60	18	20				28.4
	2-May	4	6	27	42	2				36	29	22				30.2
	16-May	2	3	14	39				1	11	33	9	1			27.2
	30-May	1	5	4	29					2	26	1				18.6
	13-Jun	5	1	5	41					1	23				1	25.8
	27-Jun	1	1	4	32					1	9					20.2
	11-Jul	5	1	3	22			2			6	1			1	17.7
	25-Jul	3	1	1	32			1			7				2	20.4
	8-Aug	4	1	1	24			2			7	1			1	18.7
	22-Aug	1		3	31	1					5	1	2			19.4
	5-Sep	3	2	1	34						2		2		2	19.9
	19-Sep	2		1	66	1			1	1	9	1	2			23.4
	3-Oct	5	1		58	2			2	2	7	2	4		1	21.9
	17-Oct	3	1	1	73					2	16	2	3			21.1
	31-Oct	4	2	1	52				1		18	2	6			18.6
	14-Nov	8	3	2	44				1		23	4	5		1	19.2
	28-Nov	10	3	3	53				3	1	15	9	2		1	17.9
	12-Dec	11	5	6	47	2			2		17	11	8		3	20.9
	26-Dec	7	9	13	37	5			6	1	6	36	1			23.2

	2 Weeks Ending	Adenovirus	Coronavirus-All	Metapneumo	Rhino/Entero	Inf A, uncharacterized	Inf A/H1	Inf A/H3	Inf A/2009H1N1	Inf B	Parainfluenza-All	RSV	Myc. pneumoniae	Chlam. pneumoniae	Bordetella pertussis	% Positive	
2014	11-Jan	5	6	7	12	79		1	130		7	89	3		1	32.5	
	25-Jan	1	9	16	11	53			88		4	55	1		2	22.5	
	8-Feb	2	17	4	9	15			43			43		1	1	16.4	
	22-Feb	2	23	19	12	14			29			23				18.5	
	8-Mar	3	28	24	13	12		1	17	2	1	23			1	22.1	
	22-Mar	1	22	26	19	4		2	9	22	2	15	1		3	23.5	
	0-Jan	0	0	0	0	0	0	0	0	0	0	0	0	0	0	0	0.0
	19-Apr	2	5	19	21	2		2	3	21	2	13	1				20.4
	3-May	7	7	22	21	4		3	1	36	4	6	1				26.7
	17-May	2	1	12	30			1	1	18	16	1			2		22.6
	31-May	4	2	3	17	2				10	22	2					19.0
	14-Jun	3		3	29	1				5	25	2					24.6
	28-Jun	5		1	22					1	19				1		23.1
	12-Jul	3	1		12	2					7		1				14.3
	26-Jul	3	1		15						6				2		17.5
	9-Aug	1	2		26					3	5		1				21.6
	23-Aug	1	1		32					1	2				1		21.3
	6-Sep	4			63						2		1		3		31.3
	20-Sep	3		2	126						6	2	4		1		36.5
	4-Oct	2			95			1			11	1	1		1		27.5
18-Oct	4	1	1	84			3		1	11	7	5				27.1	
1-Nov	4		1	60	2		2		1	17	10	2				25.8	
15-Nov	9		1	55	8		11			20	23	3	1	1		30.3	
29-Nov	5		4	48	55		41			17	26		1	1		36.3	
13-Dec	15	11	4	41	171		146	1	5	13	39	2	0	3		38.4	
27-Dec	8	13	4	42	275		165		4	10	65	1		1		39.2	

	2 W	Adt	Col	Mea	Rht	Inf	Inf	Inf	Inf	Inf	Par	RS	Myk	Chl	Boi	% F
2013	12-Jan	1	2		2	254		11	1	8	1	46			1	32.6
	26-Jan		9			83		3		8		43				18.5
	9-Feb		3	1	2	26		1		2		30	2		1	15.0
	23-Feb		4	1	2	10		1	2	6		30			1	17.1
	9-Mar		7	3	3	9		1	2	9	1	26	1		2	21.6
	23-Mar				4	1			1	11		10			1	12.4
	6-Apr		1	6	2				1	11	1	15			1	17.4
	20-Apr			7	8	1		2		16	3	10	1		4	18.6
	4-May	1	3	6	7	1			1	5	2	4				19.0
	18-May	1	1	6	5					1	1	2			1	13.3
	1-Jun		2	4	11	1					3	1			1	18.5
	15-Jun		1	1	13						8	1				16.4
	29-Jun			3	9						6				1	12.7
	13-Jul				8						4					10.2
	27-Jul	1	1		2				1		1				1	9.0
	10-Aug				4										1	5.3
	24-Aug				1										2	3.9
	9-Sep				5						2		2		5	13.0
	21-Sep				6			1			2	1	1		1	7.1
	5-Oct				19					1	1		1		1	11.7
	19-Oct				9						4	1				6.9
	2-Nov				21	1					14	2	3		1	15.3
	16-Nov	3		1	18	4	1	1	1		15	3			3	16.7
	30-Nov	1			7	3			1		4	12			3	12.4
	14-Dec	10		2	25	14	3		12	1	11	33	4		2	28.3
	28-Dec	3	2	5	22	33	1		58	1	8	46	2			29.8
2012	1-Dec				4	37		2		1		2			1	18.7
	15-Dec	1			5	127		11		3	1	23			2	36.8
	29-Dec		5			276		13	2	3	1	42			2	43.9