


# Uncover what may be causing allergies with... ImmunoCAP™ Specific IgE blood testing


A quick and convenient blood test





## Helping with a national problem


Over 111 million people in the U.S. suffer from allergies and symptoms like:<sup>1,2</sup>


- 

Coughing
- 

Stomach issues
- 

Watery eyes
- 

Sneezing
- 

Ear infections
- 

Rashes and hives

ImmunoCAP Specific IgE blood testing can help identify allergic triggers and start you on the path to better symptom management.

## Uncover a deeper understanding of your symptoms

ImmunoCAP Specific IgE blood testing can help in identifying if symptoms are caused by...<sup>3</sup>

- 

Male or female dogs
- 

Respiratory allergens
- 

Food allergens
- 

Baked or raw versions of foods
- 

Allergen cross-reactivity

## Why talk to your healthcare provider about specific IgE blood testing?

9 out of 10 people with allergies are sensitized to more than one allergen.<sup>4</sup>

Up to 90% of children and Up to 60% of adults with asthma are sensitized to allergens.<sup>5,6</sup>

The CDC recommends that people with persistent asthma be allergy tested.<sup>7</sup>

At least 1 out of 5 of people who think they are allergic to cats or dogs are actually not.<sup>9</sup>

Only 1 out of 20 people who think they have a food allergy are actually clinically diagnosed.<sup>8</sup>

## What does getting an ImmunoCAP blood test look like?

- 1 Speak to your healthcare provider about ImmunoCAP specific IgE testing\*
- 2 A blood sample will be taken
- 3 The blood sample is sent to the laboratory to be analyzed for specific IgE

Did you know that any healthcare provider can order a specific IgE blood test?<sup>†</sup>

### What is specific IgE?

- IgE is an antibody created when your body is exposed to allergens and may cause allergy symptoms.
- Specific allergens cause your body to make IgE that is *specific* to a substance... **specific IgE**.
- Measuring specific IgE levels can help clinicians determine what you may be allergic to.



- 4 Results are sent to your healthcare provider to help diagnose allergies and develop a management plan.

## Who can get an ImmunoCAP specific IgE test?

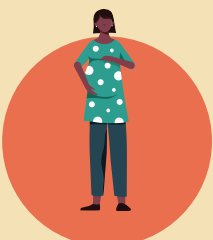
ANYONE, no matter...



Age<sup>10</sup>



Medication<sup>11,12</sup>



Pregnancy status<sup>13</sup>



Skin conditions<sup>12</sup>

## Schedule an appointment with your healthcare provider and get tested today.



Prepare for an allergy conversation with your clinician by filling out an allergy symptom tracker

\*Clinicians will consider your symptom history when determining to test.  
†"Healthcare provider" is defined here as any clinician who normally orders blood work.

**References:**  
1. Ng, Amanda E, and Peter Boersma. "Diagnosed Allergic Conditions in Adults: United States, 2021." NCHS data brief, 460 (2023): 1-8. 2. Zablotsky, Benjamin et al. "Diagnosed Allergic Conditions in Children Aged 0-17 Years: United States, 2021." NCHS data brief, 459 (2023): 1-8. 3. Matricardi, P.M., et al., EAAOI Molecular Allergy User's Guide. Pediatr Allergy Immunol. 2016. 27 Suppl 23: p 81;97:100-101;142-143;150-151;156 4. Ciprandi G, Alesina R, Ariano R, et al. Characteristics of patients with allergic polysensitization; the polisml study. Eur Ann Allergy Clin Immunol. 2008;40 (3):77-83. 5. A. Host & S.Halken, The role of Allergy in childhood Asthma, Allergy, 2000;55:600-608 6. Demoly, Pascal et al. "A Pragmatic Primary Practice Approach to Using Specific IgE in Allergy Testing in Asthma Diagnosis, Management, and Referral." Journal of asthma and allergy vol. 15 1069-1080. 16 Aug. 2022. doi:10.2147/JAA.S362588 7. "Allergy Testing for Persons with Asthma: FAQ." Center for Disease Control and Prevention (CDC). www.cdc.gov/asthma/pdfs/aa\_fact\_sheet.pdf. Accessed 10 Apr. 2023. 8. Gupta RS, Warren CM, Smith BM, Jiang J, Blumenstock JA, Davis MM, Schleimer RP, Nadeau KC. Prevalence and Severity of Food Allergies Among US Adults. JAMA Netw Open. 2019 Jan 4;2(1):e185630. doi: 10.1001/jamanetworkopen.2018.5630. PMID: 30646188; PMCID: PMC6324316. 9. Smith, Helen E et al. "Is structured allergy history sufficient when assessing patients with asthma and rhinitis in general practice?" The Journal of allergy and clinical immunology vol. 123,3 (2009): 646-50. doi:10.1016/j.jaci.2008.11.005 10. Host, Arne, and Susanne Halken. "Practical aspects of allergy-testing." Paediatric respiratory reviews vol. 4,4 (2003): 312-8. 11. Siles RI, Hsieh FH. Cle Clin J Med. 2011;78(9):585-592. 12. Gupta D. Allergy Testing - An Overview. Indian Pediatr. 2019 Nov 15;56(11):951-957. PMID: 31729325. Available from: chrome-extension://efaidnbmnnnibpcajpcglclefindmkaj/https://www.indianpediatrics.net/nov2019/951.pdf. 13. Pali-Schöll, Isabella et al. "Allergic diseases and asthma in pregnancy, a secondary publication." The World Allergy Organization journal vol. 10,1 10. 2 Mar. 2017. doi:10.1186/s40413-017-0141-8 Available from: https://www.ncbi.nlm.nih.gov/pmc/articles/PMC5333384/.