

ALVERNO LABORATORIES



# AI - powered Cancer Diagnostics

## NOW IN ROLL-OUT

Expanding on the capabilities of our early adoption of our fleet of digital pathology scanners, Alverno is leading the way as the first laboratory in the Midwest, and one of the first ten labs in the country, to offer the Ibex Platform trusted suite of artificial intelligence (AI) solutions. Our implementation includes AI-powered solutions for cancer diagnosis across multiple tissue biopsy types and will support our pathologists in providing the utmost quality of care for our patients.

- **AI-powered algorithms for:**

- Cancer detection and grading
- Distinguishing between cancer subtypes
- Identify multiple morphologic features

- **Trusted digital assistant:**

- Algorithms trained by expert pathologists
- Clinical excellence across multiple studies
- Improved user experience

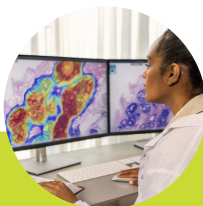


### PHASE 1

*Now Live*

**Ibex Prostate**

- *Prostate biopsies*

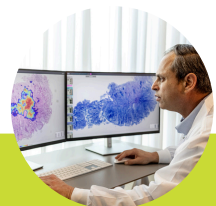


### PHASE 2

*Coming Soon*

**Ibex Breast**

- *Breast biopsies*
- *Breast excisions*



### PHASE 3

*Coming Soon*

**Ibex Gastric**

- *Stomach biopsies*



[www.AlvernoLabs.com](http://www.AlvernoLabs.com)



(800) 937-5521



2434 Interstate Plaza Dr, Hammond IN