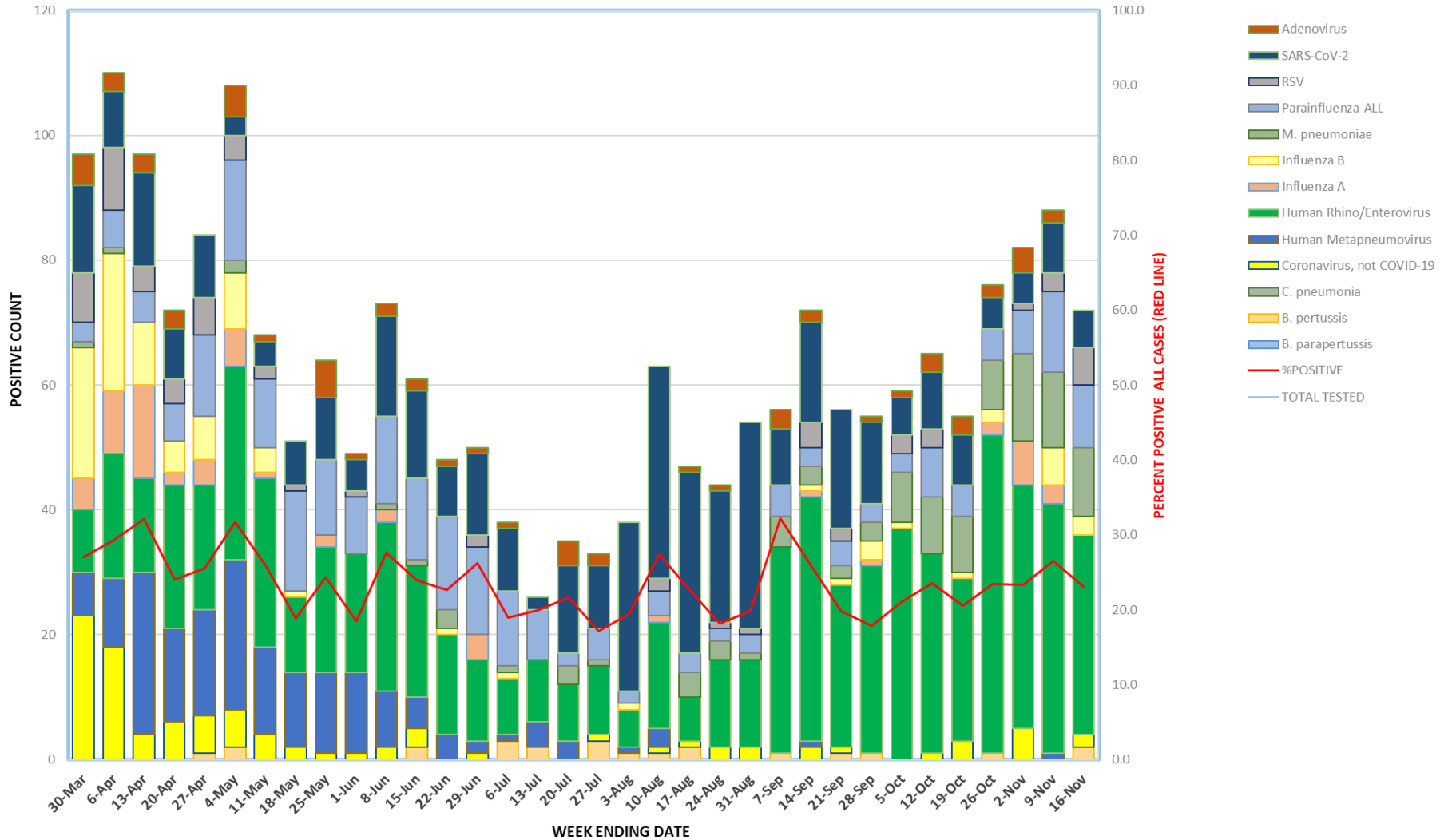


## RESPIRATORY PATHOGEN POSITIVITY

### MULTI-TARGET PANELS ONLY



WEEK ENDING	Adenovirus	B. paraperussis	B. pertussis	C. pneumonia	Coronavirus, not COVID-19	Human Metapneumovirus	Human Rhino/Enterovirus	Influenza A	Influenza B	M. pneumoniae	Parainfluenza-ALL	RSV	SARS-CoV-2	%POSITIVE	TOTAL POSITIVE	TOTAL TESTED
25-Nov	5	2					17	6	5	1	7	41	49	31.7	133	420
2-Dec	3			4	1		28	38	5		13	79	77	34.1	248	728
9-Dec	7						33	33	3		7	80	94	38.1	257	674
16-Dec	7			8	4		29	14	4	1	4	32	27	36.5	130	356
23-Dec	3			7	2		15	64	7			73	78	36.5	249	682
30-Dec	6			10			20	43	13	1	1	55	69	36.3	218	601
6-Jan				13			13	43	5	1		53	67	32.3	195	603
13-Jan	8			7	2		16	34	5			46	55	30.2	173	572
20-Jan	3			9	1		9	20	3		1	19	47	27.9	112	402
27-Jan	4			6	1		11	38	4		1	26	23	29.5	114	387
3-Feb	5			11	3		9	25	8	1		22	34	28.9	118	409
10-Feb	3			8			8	20	15			12	30	27.2	96	353
17-Feb	1			13	2		9	16	20			19	26	28.3	106	374
24-Feb	4			9	1		11	41	39			17	28	32.3	151	468
2-Mar	1			8	2		12	20	39		2	8	24	28.9	116	401
9-Mar	2		1	12	7		10		21	1	1	9	17	27.2	101	371
16-Mar	2			12	5		12	15	25		4	4	20	28.5	99	347
23-Mar	2		1	16	8		17	7	34		2	5	13	29.0	105	362
30-Mar	5			23	7		10	5	21	1	3	8	14	27.0	97	359
6-Apr	3			18	11		20	10	22	1	6	10	9	29.3	110	375
13-Apr	3			4	26		15	15	10		5	4	15	32.1	97	302
20-Apr	3			6	15		23	2	5		6	4	8	24.1	72	299
27-Apr			1	6	17		20	4	7		13	6	10	25.5	84	329
4-May	5		2	6	24		31	6	9	2	16	4	3	31.7	108	341
11-May	1			4	14		27	1	4		11	2	4	26.1	68	261
18-May				2	12		12		1		16	1	7	18.9	51	270
25-May	6			1	13		20	2			12		10	24.3	64	263
1-Jun	1			1	13		19				9	1	5	18.4	49	266
8-Jun	2			2	9		27	2		1	14		16	27.7	73	264
15-Jun	2		2	3	5		21			1	13		14	23.9	61	255
22-Jun	1				4		16		1	3	15		8	22.6	48	212
29-Jun	1			1	2		13	4			14	2	13	26.2	50	191
6-Jul	1		3		1		9		1	1	12		10	18.9	38	201
13-Jul			2		4		10				8		2	19.9	42	211
20-Jul	4				3		9			3	2		14	21.6	35	162
27-Jul	2		3		1		11			1	5		10	17.2	33	192
3-Aug			1		1		6		1		2		27	19.5	38	195
10-Aug			1		1	3	17	1			4	2	34	27.4	63	230
17-Aug	1		2		1		7			4	3		29	22.6	47	208
24-Aug	1			2			14			3	2	1	21	18.1	44	243
31-Aug				2			14			1	3	1	33	19.9	54	272
7-Sep	3		1				33			5	5		9	32.2	56	174
14-Sep	2			2	1		39	1	1	3	3	4	16	25.9	72	278
21-Sep			1		1		26		1	2	4	2	19	19.9	56	282
28-Sep	1		1				30	1	3	3	3		13	17.9	55	308
5-Oct	1						37		1	8	3	3	6	21.0	59	281
12-Oct	3				1		32			9	8	3	9	23.6	65	276
19-Oct	3				3		26		1	9	5		8	20.5	55	268
26-Oct	2		1				51	2	2	8	5		5	23.5	76	324
2-Nov	4				5		49	7		14	7	1	5	23.4	82	351
9-Nov	2				1		30	3	6	12	13	3	8	26.5	88	332
16-Nov			2		2		32		3	11	10	6	6	23.1	72	312