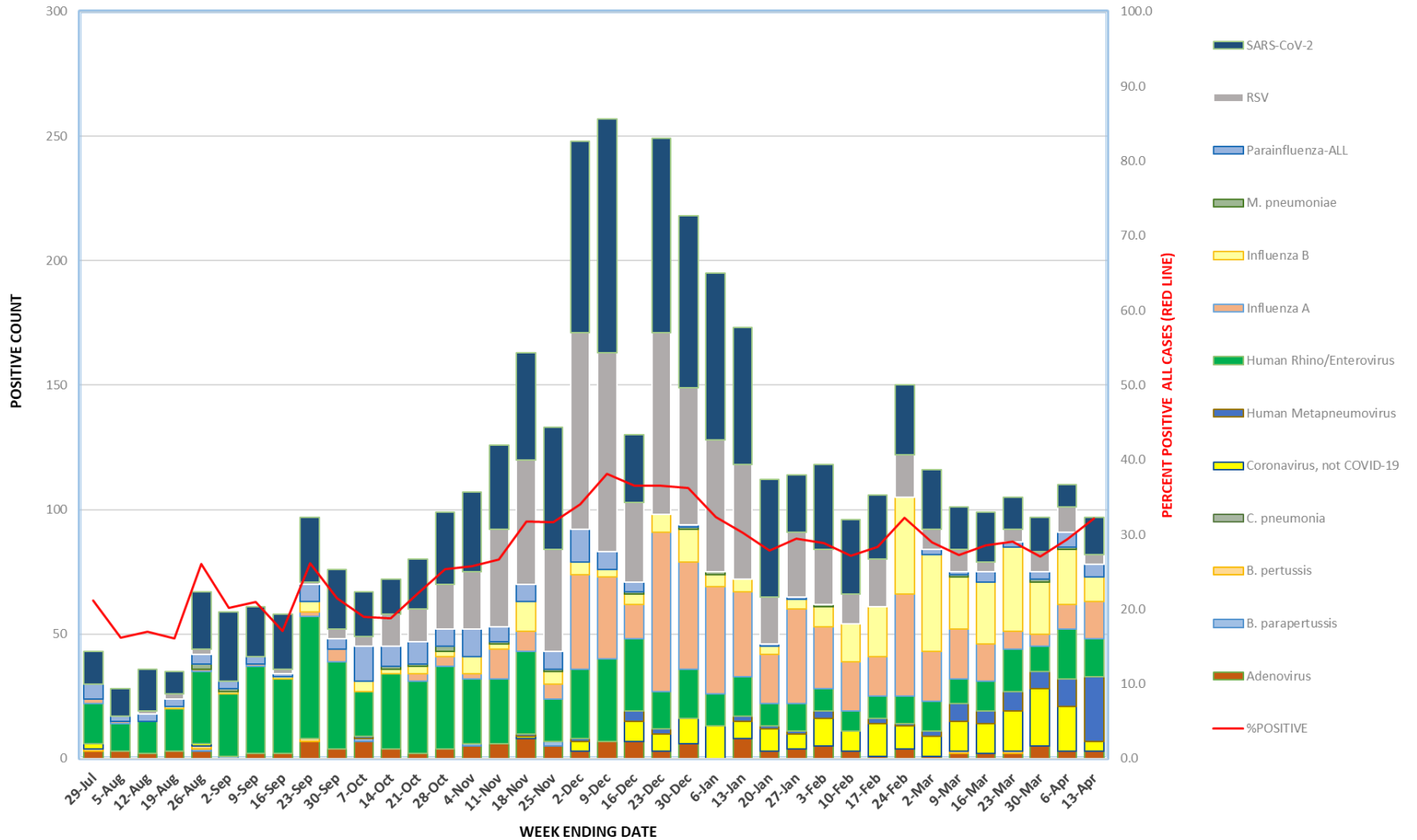


RESPIRATORY PATHOGEN POSITIVITY MULTI-TARGET PANELS ONLY



WEEK ENDING	Adenovirus	B. parapertussis	B. pertussis	C. pneumonia	Coronavirus, not COVID-19	Human Metapneumovirus	Human Rhino/Enterovirus	Influenza A	Influenza B	M. pneumoniae	Parainfluenza-ALL	RSV	SARS-CoV-2	%POSITIVE	TOTAL POSITIVE	TOTAL TESTED
22-Apr	5	1			4	8	18			9		15	18.6	60	322	
29-Apr	6	1			2	9	27			19	2	11	26.4	78	296	
6-May	4				2	12	15	1	3		16	1	19.9	63	316	
13-May	7	3			2	5	35	1	1	13	1	20	29.9	88	294	
20-May	3	1				1	13		5	11	1	5	25.2	40	159	
27-May	7	2				3	18		4	18		5	24.9	57	229	
3-Jun	2		1		2		13			19		7	20.2	44	218	
10-Jun	7	1				2	20			10	2	9	24.4	51	209	
17-Jun	2				1	2	10			11	1	4	15.0	31	206	
24-Jun	9	2					17			16		15	27.1	59	218	
1-Jul	8					1	14			10		3	19.8	36	182	
8-Jul	8	1			2		21	3		8		8	24.3	51	210	
15-Jul	6				2		19	4	2	6	1	8	23.1	49	212	
22-Jul	4	3				1	19	1		5	1	5	18.4	38	207	
29-Jul	3		1		2		16	2		6		13	21.2	43	203	
5-Aug	3						11	1		2		11	16.2	28	173	
12-Aug	2						13			3	1	17	17.0	36	212	
19-Aug	3						17		1	3	2	9	16.1	35	217	
26-Aug	3	1	1		1		29	1		2	4	2	23	26.1	67	257
2-Sep		1					25		1	1	3		28	20.2	59	292
9-Sep	2						35	1		3		20	21.0	61	291	
16-Sep	2						30		1	1	2	22	17.1	58	339	
23-Sep	7		1				49	2	4	7	1	26	26.1	97	371	
30-Sep	4						35	5		4	4	24	21.5	76	354	
7-Oct	7	1				1	18		4	14	4	18	19.0	67	352	
14-Oct	4						30		2	1	8	13	14	18.8	72	383
21-Oct	2						29	3	3	1	9	13	20	22.2	80	360
28-Oct	4						33	4	2	2	7	18	29	25.3	99	391
4-Nov	5	1					26	2	7	11	23	32	25.7	107	416	
11-Nov	6						26	12	2	1	6	39	34	26.6	126	473
18-Nov	8				1	1	33	8	12	7	50	43	31.7	163	514	
25-Nov	5	2					17	6	5	1	7	41	49	31.7	133	420
2-Dec	3				4	1	28	38	5	13	79	77	34.1	248	728	
9-Dec	7						33	33	3	7	80	94	38.1	257	674	
16-Dec	7				8	4	29	14	4	1	4	32	27	36.5	130	356
23-Dec	3				7	2	15	64	7		73	78	36.5	249	682	
30-Dec	6				10		20	43	13	1	1	55	69	36.3	218	601
6-Jan					13		13	43	5	1		53	67	32.3	195	603
13-Jan	8				7	2	16	34	5		46	55	30.2	173	572	
20-Jan	3				9	1	9	20	3		1	19	47	27.9	112	402
27-Jan	4				6	1	11	38	4		1	26	23	29.5	114	387
3-Feb	5				11	3	9	25	8	1		22	34	28.9	118	409
10-Feb	3				8		8	20	15			12	30	27.2	96	353
17-Feb	1				13	2	9	16	20			19	26	28.3	106	374
24-Feb	4				9	1	11	41	39			17	28	32.3	151	468
2-Mar	1				8	2	12	20	39		2	8	24	28.9	116	401
9-Mar	2		1		12	7	10	20	21	1	1	9	17	27.2	101	371
16-Mar	2				12	5	12	15	25		4	4	20	28.5	99	347
23-Mar	2		1		16	8	17	7	34		2	5	13	29.0	105	362
30-Mar	5				23	7	10	5	21	1	3	8	14	27.0	97	359
6-Apr	3				18	11	20	10	22	1	6	10	9	29.3	110	375
13-Apr	3				4	26	15	15	10		5	4	15	32.1	97	302