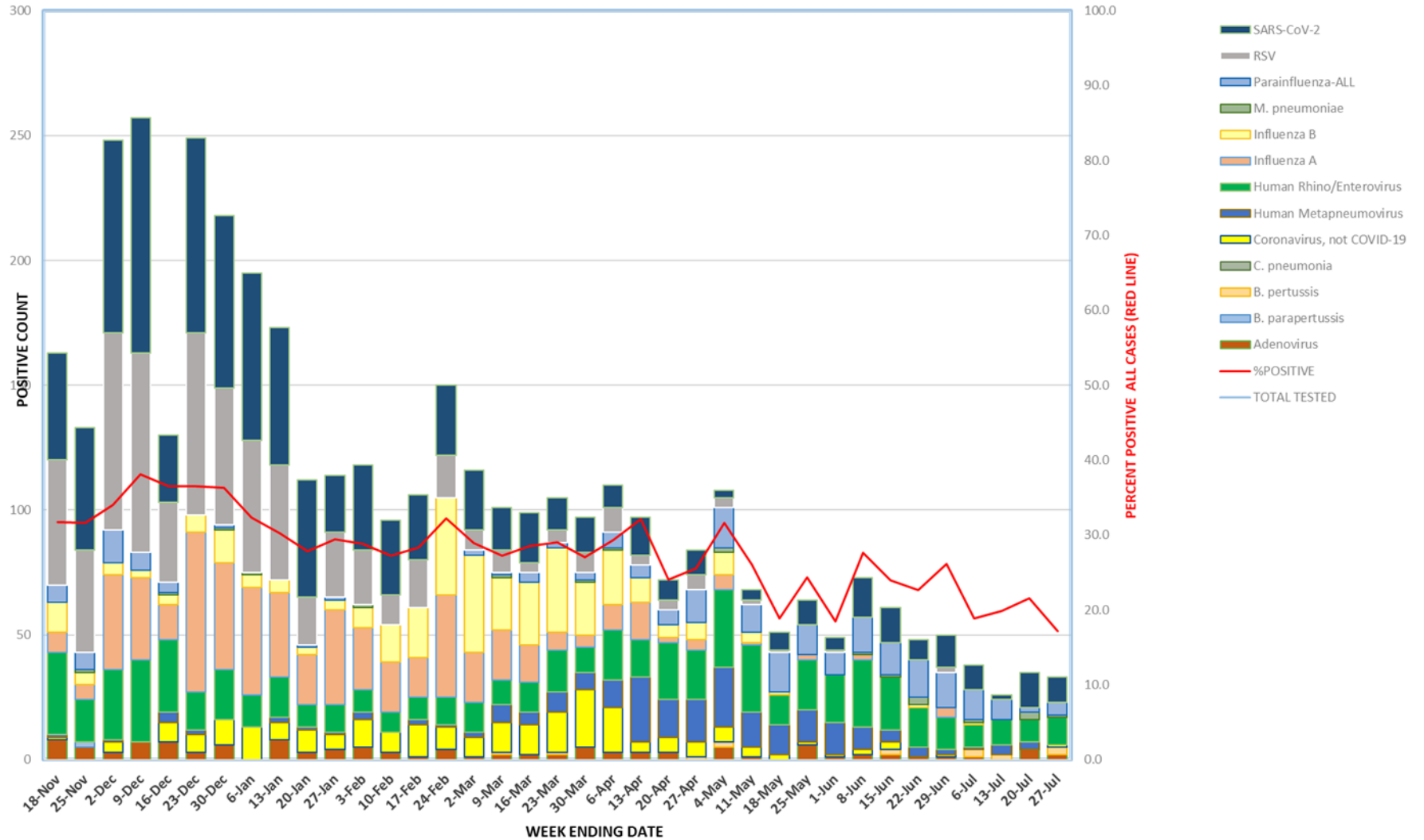


## RESPIRATORY PATHOGEN POSITIVITY

### MULTI-TARGET PANELS ONLY



WEEK ENDING	Adenovirus	B. paraperthusis	B. pertussis	C. pneumonia	Coronavirus, not COVID-19	Human Metapneumovirus	Human Rhino/Emerovirus	Influenza A	Influenza B	M. pneumoniae	Parainfluenza-ALL	RSV	SARS-CoV-2	%POSITIVE	TOTAL POSITIVE	TOTAL TESTED
15-Jul	6			2		19	4	2	1	6	1	8	23.1	49	212	
22-Jul	4	3				19	1			5	1	5	18.4	38	207	
29-Jul	3		1	2		16	2			6		13	21.2	43	203	
5-Aug	3					11	1			2		11	16.2	28	173	
12-Aug	2					13				3	1	17	17.0	36	212	
19-Aug	3					17		1		3	2	9	16.1	35	217	
26-Aug	3	1	1	1		29	1		2	4	2	23	26.1	67	257	
2-Sep		1				25		1	1	3		28	20.2	59	292	
9-Sep	2					35	1			3		20	21.0	61	291	
16-Sep	2					30		1		1	2	22	17.1	58	339	
23-Sep	7		1			49	2	4		7	1	26	26.1	97	371	
30-Sep	4					35	5			4	4	24	21.5	76	354	
7-Oct	7	1			1	18		4		14	4	18	19.0	67	352	
14-Oct	4					30		2	1	8	13	14	18.8	72	383	
21-Oct	2					29	3	3	1	9	13	20	22.2	80	360	
28-Oct	4					33	4	2	2	7	18	29	25.3	99	391	
4-Nov	5	1				26	2	7		11	23	32	25.7	107	416	
11-Nov	6					26	12	2	1	6	39	34	26.6	126	473	
18-Nov	8			1	1	33	8	12		7	50	43	31.7	163	514	
25-Nov	5	2				17	6	5	1	7	41	49	31.7	133	420	
2-Dec	3			4	1	28	38	5		13	79	77	34.1	248	728	
9-Dec	7					33	33	3		7	80	94	38.1	257	674	
16-Dec	7			8	4	29	14	4	1	4	32	27	36.5	130	356	
23-Dec	3			7	2	15	64	7			73	78	36.5	249	682	
30-Dec	6			10		20	43	13	1	1	55	69	36.3	218	601	
6-Jan						13	43	5	1		53	67	32.3	195	603	
13-Jan	8			7	2	16	34	5			46	55	30.2	173	572	
20-Jan	3			9	1	9	20	3		1	19	47	27.9	112	402	
27-Jan	4			6	1	11	38	4		1	26	23	29.5	114	387	
3-Feb	5			11	3	9	25	8	1		22	34	28.9	118	409	
10-Feb	3			8		8	20	15			12	30	27.2	96	353	
17-Feb	1			13	2	9	16	20			19	26	28.3	106	374	
24-Feb	4			9	1	11	41	39			17	28	32.3	151	468	
2-Mar	1			8	2	12	20	39		2	8	24	28.9	116	401	
9-Mar	2		1	12	7	10	20	21	1	1	9	17	27.2	101	371	
16-Mar	2			12	5	12	15	25		4	4	20	28.5	99	347	
23-Mar	2		1	16	8	17	7	34		2	5	13	29.0	105	362	
30-Mar	5			23	7	10	5	21	1	3	8	14	27.0	97	359	
6-Apr	3			18	11	20	10	22	1	6	10	9	29.3	110	375	
13-Apr	3			4	26	15	15	10		5	4	15	32.1	97	302	
20-Apr	3			6	15	23	2	5		6	4	8	24.1	72	299	
27-Apr			1	6	17	20	4	7		13	6	10	25.5	84	329	
4-May	5		2	6	24	31	6	9	2	16	4	3	31.7	108	341	
11-May	1			4	14	27	1	4		11	2	4	26.1	68	261	
18-May				2	12	12		1		16	1	7	18.9	51	270	
25-May	6			1	13	20	2			12		10	24.3	64	263	
1-Jun	1			1	13	19				9	1	5	18.4	49	266	
8-Jun	2			2	9	27	2		1	14		16	27.7	73	264	
15-Jun	2		2	3	5	21			1	13		14	23.9	61	255	
22-Jun	1				4	16		1	3	15		8	22.6	48	212	
29-Jun	1			1	2	13	4			14	2	13	26.2	50	191	
6-Jul	1		3		1	9		1	1	12		10	18.9	38	201	
13-Jul			2		4	10				8		2	19.9	42	211	
20-Jul	4				3	9			3	2		14	21.6	35	162	
27-Jul	2		3	1		11			1	5		10	17.2	33	192	